



Improve your image

ClearVue 550 ultrasound system

PHILIPS

Smart and intuitive

One look at the Philips ClearVue 550 ultrasound system and you'll see the smooth, graceful lines and elegant design that show this is a new Philips quality imaging system. The versatile ClearVue 550 with Active Array technology offers image quality designed to enhance diagnostic confidence, features that are sophisticated enough to be simple, and advances in workflow, ease of use, and reliability.

Improve your image(s)

Your patients expect the best from you. ClearVue 550 helps you deliver. Count on stunning images with the speed and precision gained from years of Philips ultrasound experience worldwide. Proprietary Active Array technology integrates key imaging technologies into the transducer for superb images in a lightweight system. Create quality 2D, color, and Doppler images with the press of the iSCAN button. Tap the power of Philips exclusive SonoCT and XRES technologies to enhance image quality.

Sophisticated, yet simple

ClearVue 550 is intuitive to learn because it puts the controls you use most often precisely where you expect them to be. The sleek control panel is designed to help speed image acquisition and management, while customized SmartExam protocols streamline workflow and enhance productivity.

Smart design

ClearVue 550's elegant design hints at the reduced complexity of the system. The modular design means enhanced serviceability and reliability inside a lightweight cart for increased portability and maneuverability.



ClearVue 550 features a 19-inch fold-down LCD monitor with full motion, articulating arm, and on-cart storage.

ClearVue makes it simple

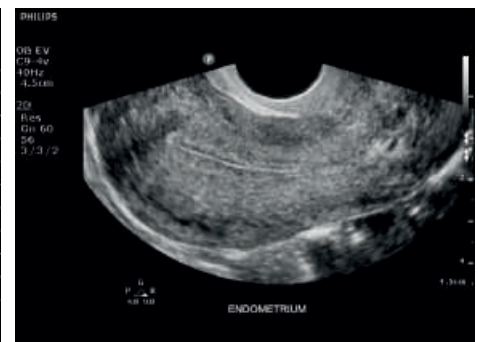
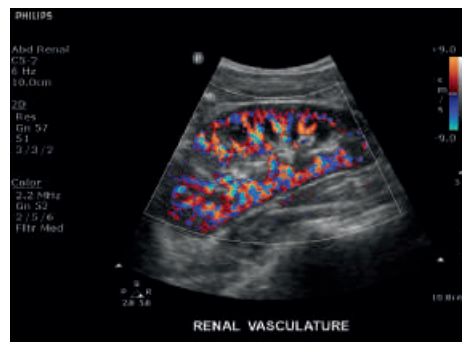
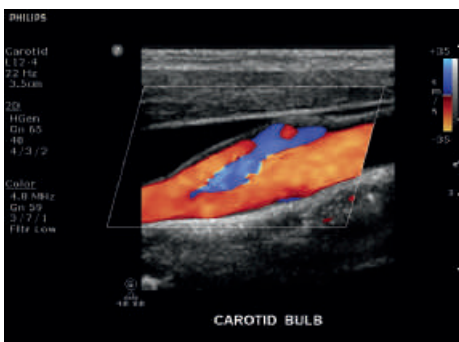
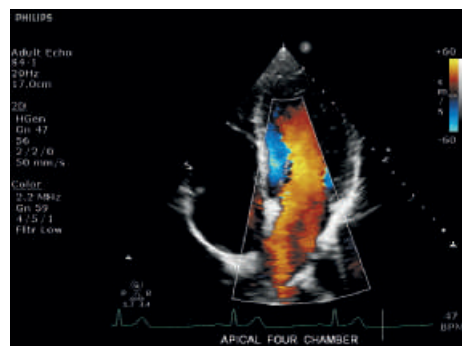
ClearVue 550 offers advanced Philips automation, procedure guidance, and flexibility with the image quality you demand, with features such as iSCAN one-button automation and SmartExam protocols. Philips provides advances in workflow and customizable report templates that are easy to work with, including easy query for data entry fields.



The one-button automation of iSCAN rapidly optimizes exam parameters so that users can focus more on their patients and less on system adjustments.

Valuable performance

The system looks sleek from the outside, but it's what's on the inside that you'll value most. Powered by Philips proprietary Active Array technology, the ClearVue 550 is destined to alter your perception of ultrasound by delivering diagnostic images with quality, speed, and precision. We have integrated proven technologies such as XRES and SonoCT from our most advanced ultrasound systems into the ClearVue 550 so you get the excellent image quality you expect from the leader in premium quality ultrasound.



Transducer presets help leverage transducer strengths, and four transducer connectors allow users to quickly switch transducers when needed.



Designed around you, the intuitive user interface provides direct access to the controls you use most often, speeding exams and enhancing workflow.

Demonstrating value far beyond its price

What it is	Why it matters
Core features	
Active Array technology	Integrates key imaging technologies into the transducer for superb image quality in a high-performing, lightweight, reliable system
Broadband beamforming and advanced signal processing	Acquires and processes the entire tissue signature for premium class tissue differentiation across multiple patient types
Advanced Doppler and color Doppler capabilities (CW, PW, CFI, CPA, HPRF PW, TDI, Triplex)	Perform advanced clinical studies with confidence
Configurable reports and analysis	Perform customized in-depth clinical analysis and reporting for enhanced communication of results
OB workflow enhancements (Quick-launch OB calcs, quad view/AFI, flush analysis at end exam, 40+ week OB tables, follicle measurement display side-by-side report, date of conception, report printer selection, PDF report on USB)	May reduce exam time and enhance workflow
Options	
XRES adaptive image processing and SonoCT image compounding	XRES reduces speckle noise artifacts for better margin definition and image clarity, while SonoCT reduces artifacts, improves contrast resolution, and allows irregular borders to be more readily visualized
Advanced system automation (2D, color and PW Doppler iSCAN options, 2D OPT, High Q, Intelligent Doppler, Adaptive Doppler, Adaptive color Doppler)	Quick one-button system performance optimization streamlines your workflow, may enhance patient throughput, and increases exam consistency
Tissue Harmonic Imaging with pulse inversion technology	Reduces many artifacts while preserving tissue definition and resolution
Anatomical M-mode option	Easily generate M-mode trace from a user-defined line; ideal for patients with abnormal cardiac shapes or malpositioned cardiac structures
Panoramic and Freehand 3D imaging	Perform extended field of view imaging and freehand 3D surface rendering for enhanced exam documentation and communication
SmartExam protocols	Exam system-guided protocols enhance performance, increase consistency, and reduce exam time
DICOM networking option	Provides Ethernet connection to DICOM networks for PACS viewing and archiving capabilities
Barcode scanner	Obtains patient information from hospital-generated barcodes to accelerate efficiency and decrease errors in data



The lightweight system has a small footprint for increased portability and easy maneuverability, making it a perfect fit even in small spaces.

Making the most of your system

Designed for serviceability and reliability, the ClearVue 550 provides advances that help you optimize your system every day. Advanced serviceability features and value-added services are designed to help keep you running at peak performance. We are committed to you and your success.

Head to toe, versatility is yours

Use the ClearVue 550 to enhance your ultrasound capabilities across a range of applications.

- Abdominal
- Small parts and superficial
- Pediatric
 - Head
 - Hips
- Musculoskeletal
- Urology and prostate
- Obstetrical
- Gynecological and fertility
- Vascular
 - Cerebrovascular
 - Peripheral vascular
- Transcranial Doppler
- Cardiac
 - Adult
 - Pediatric

Advanced serviceability features and value-added services*

Philips advanced service features and value-added services boost productivity and promote uptime. Where available, Remote Desktop enables “virtual visits,” enhancing technical and clinical support and offering new options for training. Proactive monitoring promotes uptime through continuous monitoring that alerts Philips personnel to potential problems so they can be corrected before system operation is affected. You can also connect your system to the Philips Remote Service Network and enter a support request directly from your ClearVue 550 system, or generate a utilization report that provides data on key parameters to help you manage how the system is used. On-cart software maintenance tools help optimize, maintain, and repair system software with ease and protect custom annotations, calculations, presets and patient data.

A green product

Sustainability at Philips is all about improving the health and well-being of individuals and the communities they live in. The ClearVue 550 is energy efficient. With low power consumption, it helps save on energy costs. And its low heat dissipation is ideal in smaller rooms which may help reduce cooling costs.



* Not all services are available in all geographies and require service contract coverage.

Trust in the Philips ultrasound legacy

At Philips, we've built our innovative portfolio of ultrasound products by striving for change that improves and simplifies the lives of patients and healthcare providers worldwide. The new ClearVue 550, with leading-edge technology and an intuitive design, is no exception. Quality healthcare is now more accessible and affordable from a brand you can trust.

Innovative financing and security solutions

Philips Medical Capital delivers flexible financial solutions to help you place a new ClearVue 550 in your facility or practice. Our financial experts understand your unique financial needs and provide flexible solutions that optimize asset utilization, reduce costs, and increase financial flexibility.



The ClearVue 550's modular design makes it simple to service and highly reliable, helping to further lower the cost of ownership.

Philips SmartPath assures you easy access to solutions and innovations for the full life of your ultrasound system, so you can boost your clinical and operational potential and achieve your organizational goals.



Optimize

Optimize your system's performance both now and in the future with regular and ongoing updates, including functionality improvements and remote technical support.



Enhance

Enhance your equipment with regular technology upgrades, and take advantage of the newest features and capabilities.



Transform

Transform your investment at the end of your system's life by transitioning seamlessly to a next-generation solution or refurbished option.



Please visit www.philips.com/ClearVue550

© 2013 Koninklijke Philips Electronics N.V. All rights are reserved.
Philips Healthcare is part of Royal Philips Electronics

Philips Healthcare reserves the right to make changes in specifications and/or to discontinue any product at any time without notice or obligation and will not be liable for any consequences resulting from the use of this publication.

Printed in The Netherlands
4522 962 91241 * JAN 2013

How to reach us
www.philips.com/healthcare
healthcare@philips.com

Product information
www.philips.com/